



STRATA

SUPERIOR WELDING PRODUCTS

ADVANCEMIG 315C



315A COMPACT INVERTER MIG / MMA WELDER

This 3-phase, multi-process welding machine offers the latest in IGBT inverter technology in a compact package making it ideal for a range of jobs. Built tough with intelligent protection system to withstand the harshest of environments in the NZ workplace.

- IGBT Module inverter technology for smooth & stable welding output, increased reliability and high duty cycle
- 4 Roll geared metal wire feed unit provides a powerful and smooth wire feed
- Intelligent digital wire feeder with all MIG controls and display on the wire feeder control panel
- Digital microprocessor control system with superior & dynamic arc characteristics
- Optional integrated heavy duty industrial trolley available with storage compartment or integrated water cooler
- Remote control spool gun connection gives effective results welding with soft wires such as aluminium. Suitable for MIG brazing with bronze wires
- Lightweight and compact design - ideal for portable applications
- MIG waveform (inductance) gives good control of the arc for smooth welding results
- Industrial IP23 casing with front panel protection, resists damage, moisture and corrosion
- Great control MIG welding with adjustable pre flow, post flow, burn back and soft start settings
- Extreme stress tested in production up to 550V, ensuring rugged reliability
- 2T/4T trigger operation with crater control settings
- Dual digital display meters for accurate pre-setting and feedback of welding parameters and output
- Intelligent protection system with temperature, voltage and current sensors for increased reliability & safety
- Designed to work with generator power supply with protection from power surges.
- Reversible polarity MIG welding operation - suitable for gas and gasless welding.
- Quick connect inlet gas fitting
- Accessories include 3m earth lead with heavy duty earth clamp, 4m MMA lead with heavy duty twist lock electrode holder, MT360-4E MIG torch, 2 stage flowmeter, argon gas regulator and adapter, hose clamps and MIG drive rollers.



POWER FACTOR CORRECTION



CONSTANT CURRENT / VOLTAGE



DIRECT CURRENT



LED SCREEN



400V 50HZ 3 PHASE



SPOOL GUN READY



INTELLIGENT PROTECTION SYSTEM



IGBT INVERTER TECHNOLOGY



SPIKE/ GENERATOR SAFE



CORROSION RESISTANT

DIMENSIONS (LxWxH)	WEIGHT	INPUT POWER SUPPLY	INPUT POWER SUPPLY TOLERANCE	MAXIMUM INPUT CURRENT	GENERATOR CAPACITY	MIG OUTPUT VOLTAGE	MIG OUTPUT CURRENT	MIG DUTY CYCLE	WIRE FEEDING SPEED	MMA CURRENT OUTPUT	MMA O/C VOLTAGE
680 x 240 x 450mm	26kg	400V AC 32A 3 PHASE 50/60Hz	±20%	20A	17kVA	14.8 - 30V	15 - 315A	315A@40% 200A@100%	2.4 - 18 m/min	10 - 315A	70V

MMA DUTY CYCLE	INSULATION CLASS	POWER EFFICIENCY	POWER FACTOR	STANDARDS	MIG DRIVE ROLLERS AVAILABLE	MIG WIRE SPOOL SIZE	MMA ROD SIZE	WARRANTY
315A@35% 195A@100%	IP23	85%	0.7	EN60974-1: 2012	V Groove: 0.6 /0.8/0.9/1.0/1.2mm Knurled: 0.8/0.9/1.0/1.2mm U Groove: 0.8/1.0/1.2mm	D200mm/ D300mm 5kg /15kg	2.4 - 6.0mm	36 months








STRATA

SUPERIOR WELDING PRODUCTS



ADVANCEMIG 315C MIG WELDING ACCESSORIES & CONSUMABLES

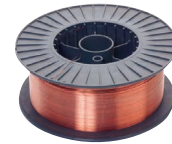
○ Standard ● Optional
☆ Common Consumables

ACCESSORY:	ADVANCEMIG 315C:
Arc Leads 	○ AAL3550
Earth Leads 	○ AEL3550
MIG Torch 	○ MT240-4E
Argon Regulator 	○ GR101AR
Gas Hose 	○ GH08
MIG Starter Kit	● MB36KIT
TIG Torch	● 17374
Spool Gun	● SP240P
DC TIG Starter Kit	● DCKIT
Drive Roller 'V' Groove 0.6 - 0.8mm	○ 17835 (x 2)
Drive Roller 'V' Groove 0.9 - 1.0mm	○ 17836 (x 2)
Drive Roller 'V' Groove 1.0 - 1.2mm	-
Drive Roller 'U' Groove 0.8 - 1.0mm	● 17841 (x 2)
Drive Roller 'U' Groove 1.0 - 1.2mm	-
Drive Roller 'U' Groove 1.2 - 1.6mm	● 17842 (x 2)
Drive Roller Knurled 0.8 - 0.9mm	○ 17838 (x 2)
Drive Roller Knurled 1.0 - 1.2mm	● 17839 (x 2)
Drive Roller Knurled 1.2 - 1.6mm	● 17840 (x 2)
MIG Tips (MMT) 0.6 - 1.6mm	☆ 0.6, 0.8, 0.9 1.0, 1.2, 1.6mm
MIG Shrouds (MCN) 70 = Conical 71 = Cylindrical	☆ MCN3670 MCN3671
Tip Adaptors (MTA) 81 = M6	☆ MTA3681 MTA3682

Mild Steel MIG Wire - ER70S-6

- Copper coated MIG wire for general purpose welding of mild steel using CO₂ or argon based shielding gases.

CODE:	DESCRIPTION:
MW15KG06	15kg Spool - 0.6mm MIG wire (D200)
MW15KG08	15kg Spool - 0.8mm MIG wire (D200)
MW15KG09	15kg Spool - 0.9mm MIG wire (D200)



Industrial Storage Unit

- Fits in industrial welding trolley (#22108)
- 620 x 420 x 290mm
- Convenient storage for welding wire, electrodes, gloves and welding accessories.

22115	Industrial Storage Unit - V2
-------	------------------------------



Industrial Storage Trolley

- Pull out drawer with storage, 25.85kg

32673	Integrated Trolley to suit Compact MIG Models
-------	---



Automatic Welding Helmets

- Variable Shade • Complete with batteries ready to go
- Suitable for automotive DIY and industrial use.

SV3000	Auto Welding Helmet, Shade 5 - 13 + Grind Function (MIG/TIG/MMA/Plasma)
SV4000	Auto Welding Helmet, Shade 4 - 13 + Grind Function (MIG/TIG/MMA/Plasma)
DW7000XL	Auto Welding Helmet, Shade 5 - 13 + PRSL Filtration System (MIG/TIG/MMA/Plasma)



SV3000



SV4000



DW7000XL comes with battery powered air respirator.